

VISUAL ANALYSIS MODEL PHOTOS

Highway 34 Development

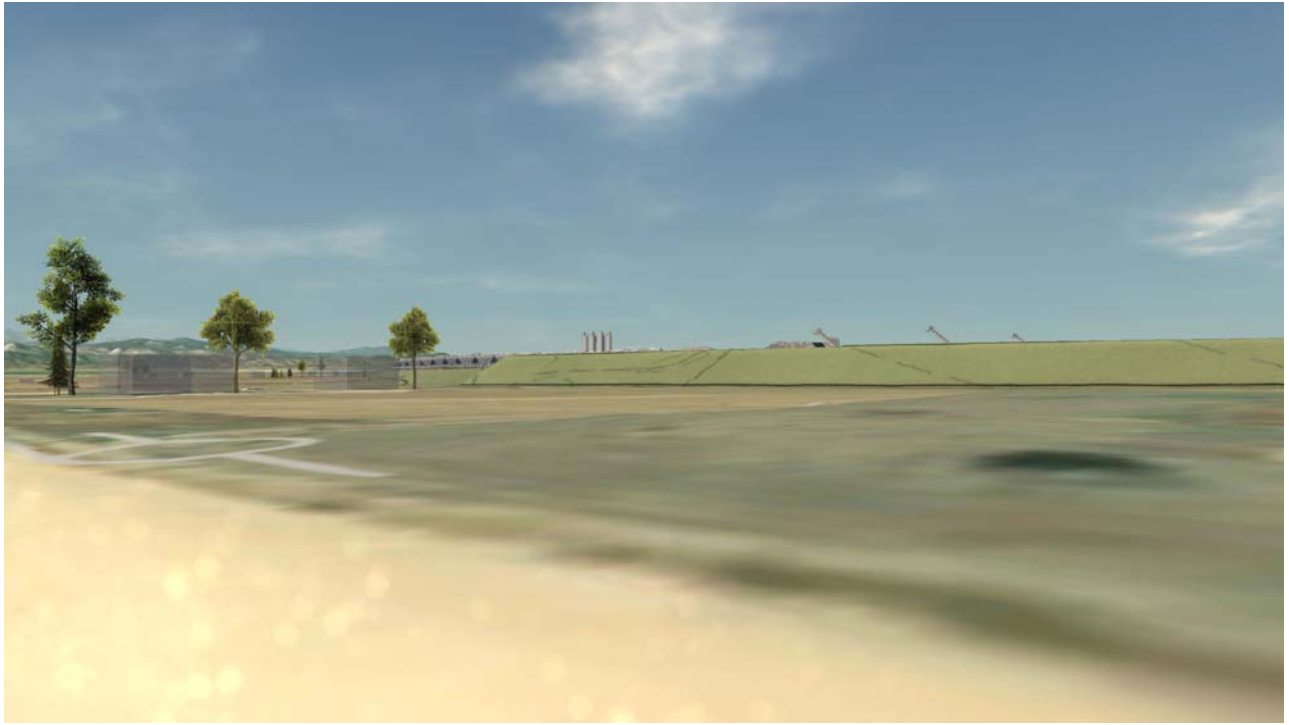
Martin Marietta hired Chase Mullen, Director of Digital Design, with MIG, Inc. to develop a visual analysis model of the facility to help neighbors visualize what the proposed Highway 34 Development facility will look like. Some neighbors to the east of the facility were concerned about how the facility might impact their views to the West.

Below is a legend followed by screenshots showing various views of the facility. In addition, we have provided a couple of aerial views of the facility. The model was generated using final topography for the site and architectural renderings of the facilities. For purposes of this application, we focused on the views looking from the east to the west.

LEGEND



From Viewpoint “A” Looking Northwest



From Viewpoint “B” Looking Southwest



From Viewpoint “C” Looking Southwest



From Viewpoint “D” Looking Southwest



From Viewpoint “E” Looking West



Aerial View from Southeast of the Site Looking Northwest



Aerial View from Northeast of the Site Looking Southwest

